

CRITICAL INSIGHTS CARDS



Welcome to your critical insights reading tool!

Everyone needs a little help to “read between the lines”.

This resource is designed to help you read with “a critical eye” when you need to at home.

It was made with the help of high school students learning English just like you!



What
language
is used?



What language is used?

LANGUAGES

QUESTION MARKS

SPRÄK

NGÔN

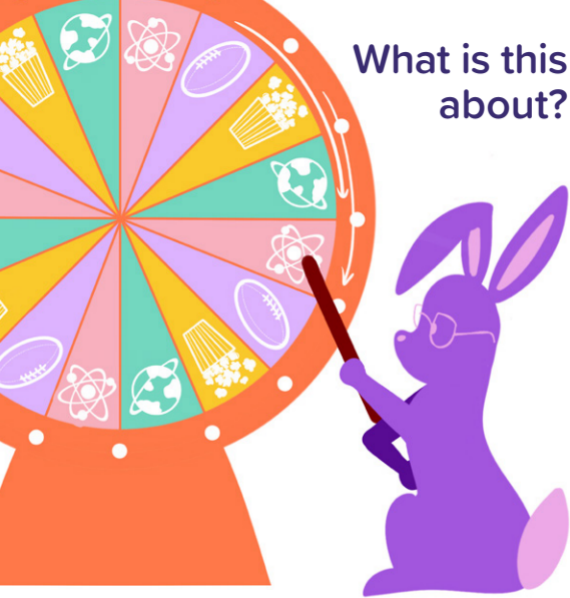
QUESTION MARKS



Is this my home language?

What difference does
it make when I read in
my home language or
in English?

What is this about?



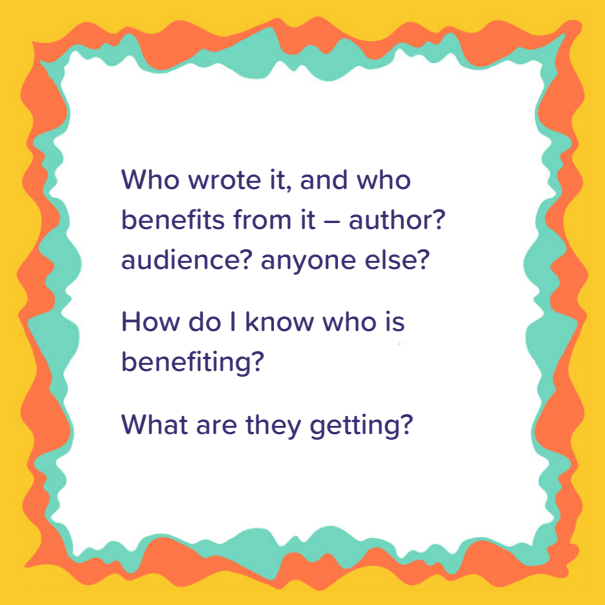


What is the topic?

How do I know?

Who wrote it?
Who benefits?





Who wrote it, and who
benefits from it – author?
audience? anyone else?

How do I know who is
benefiting?

What are they getting?



**Whose
viewpoint?**



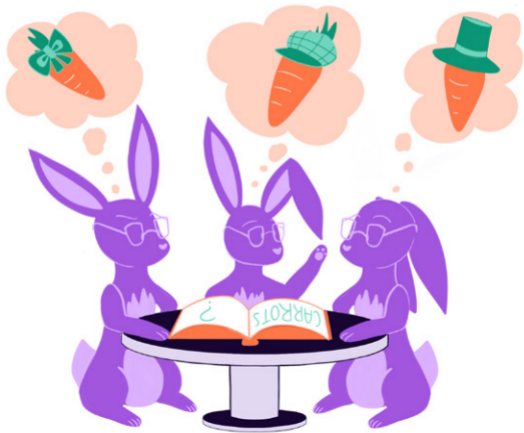


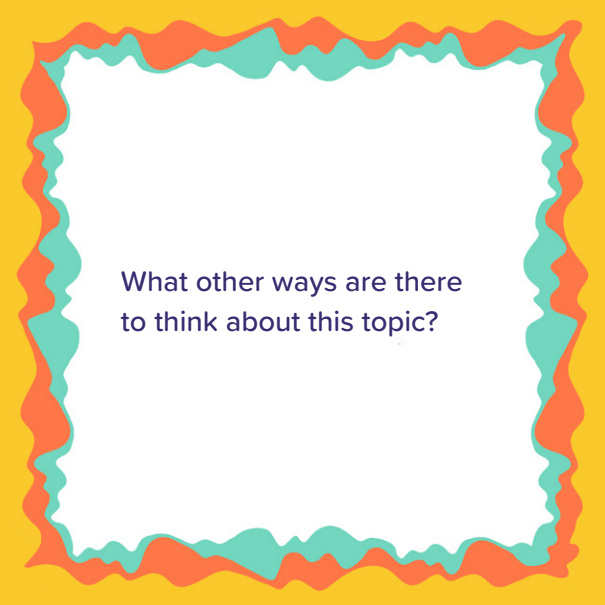
Whose viewpoint is seen?

Whose viewpoint is
not seen?

How do I know?

What are some other views on this topic?

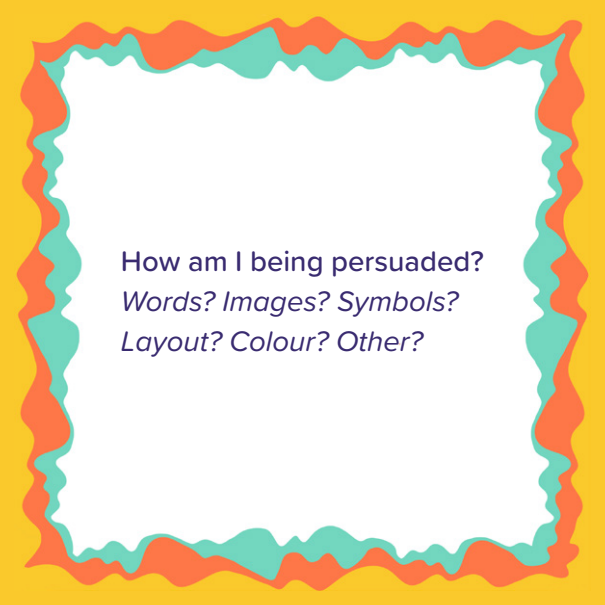




What other ways are there
to think about this topic?

How is the author
persuading
me?





How am I being persuaded?
Words? Images? Symbols?
Layout? Colour? Other?

Can I trust this?





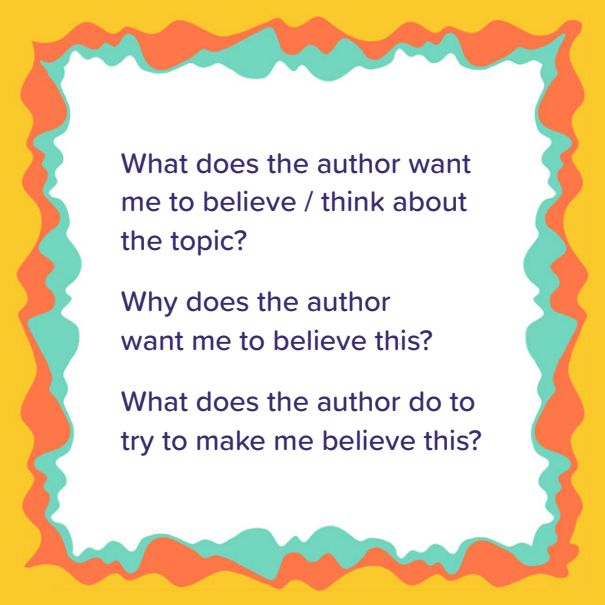
Is this text reliable?

What makes it trustworthy
or not?

How do I know?

What does the author
want me to believe?





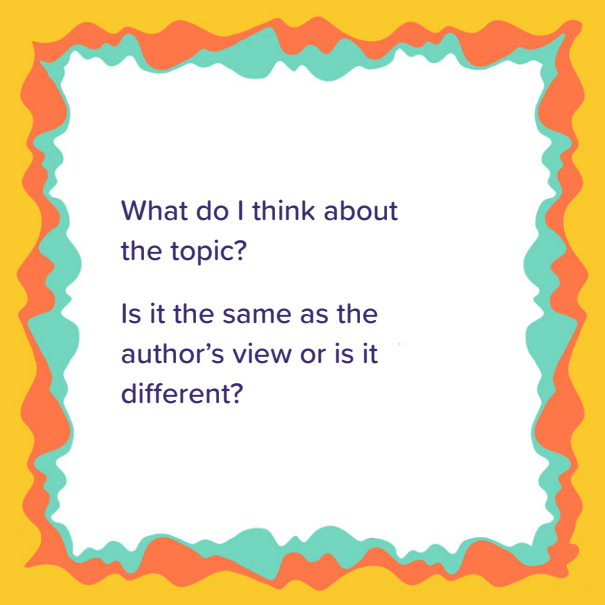
What does the author want
me to believe / think about
the topic?

Why does the author
want me to believe this?

What does the author do to
try to make me believe this?

What do I think
about the topic?





What do I think about
the topic?

Is it the same as the
author's view or is it
different?



These Critical Insights cards derive from a study about critical literacies with migrant and refugee-background youth in and out of school. The study was led by Associate Professor Jennifer Alford, funded by the Australian Research Council and supported by QLD Department of Education, Griffith Institute for Educational Research, and Liveworm Studio, Queensland College of Art and Design.

j.alford@griffith.edu.au

