

The image features a hand at the bottom left holding a stack of colorful cards. The cards are arranged in a perspective view, receding into the distance. The colors of the cards include shades of blue, green, yellow, orange, and pink. Overlaid on this stack is the text "CRITICAL INSIGHTS CARDS" in a large, white, bold, sans-serif font with a black outline. The text is arranged in three lines: "CRITICAL" on the top line, "INSIGHTS" on the middle line, and "CARDS" on the bottom line. The entire scene is set against a light yellow background with a subtle gradient and a white, cloud-like shape behind the text.

**CRITICAL
INSIGHTS
CARDS**

Welcome to your critical insights reading tool!

Everyone needs a little help to "read between the lines".

This resource is designed to help you read with "a critical eye" when you need to at home.

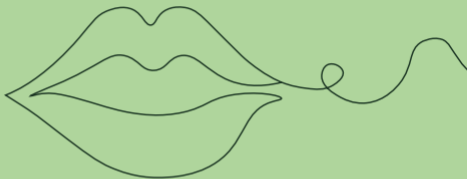
It was made with the help of high school students learning English just like you!





لغة
languaziman
Language
wika
زبن
idioma
lughha

What
language
is used?



Is this my home language?

*What difference does it make when
I read in my home language or
in English?*



What is the
topic
and how do
I know?



What topic or topics are included here?

What helps you to identify the topic/s?

Who
wrote/made
it?



Who
benefits?



*Who wrote it? Who benefits from it?
– author? audience? anyone else?*

*What evidence can you find for
who benefits?*

What are they benefiting?

Whose **viewpoint**
is seen/not seen?





What view point is on display?

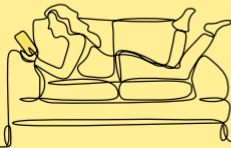
*Are there other points of view
not on display?*

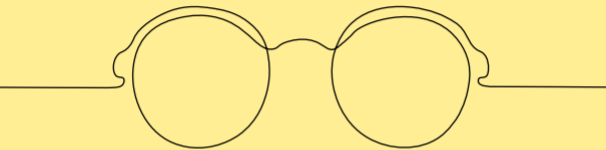
How do I know?

Who has been left out?



What
alternative views
are there on the topic?



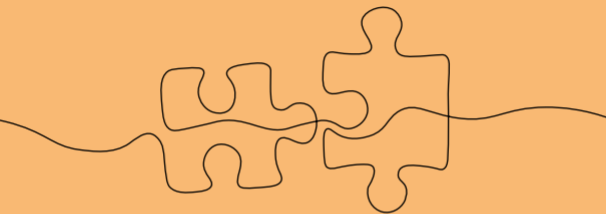


*Everything can be seen from different
angles / perspectives.*

What are some other views?

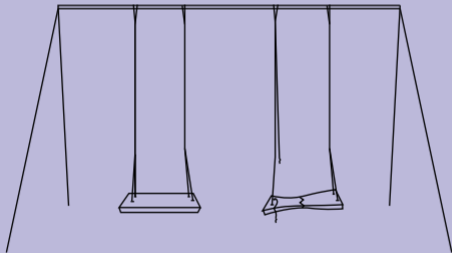
How is the author
persuading
me?

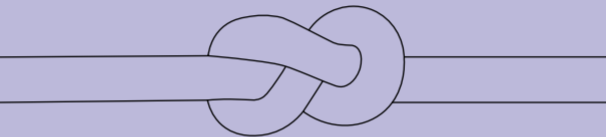




*What words, images, symbols,
layout, colour etc are being used
to persuade me?*

Can I
trust
this?



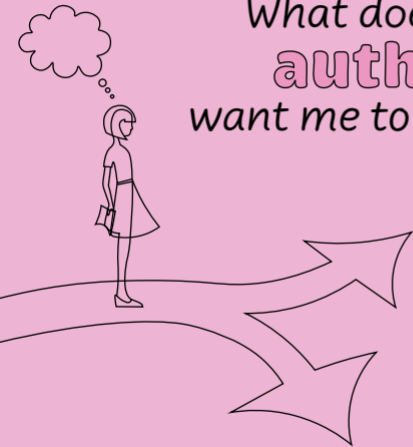


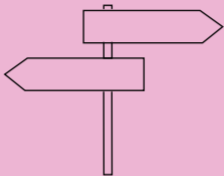
Is the text reliable?

What makes it trustworthy or not?

How do I know?

What does the
author
want me to believe?





What does the author want me to believe / think about the topic overall?

Why does the author want me to believe this?

How does the author attempt to achieve this?

What do
I think
about the topic?





You need to know where you stand
on an issue / topic.

Do you agree with the author's view?

Or do you have a different view?

These Critical Insights cards derive from a study about critical literacies with migrant and refugee-background youth in and out of school. The study was led by Associate Professor Jennifer Alford, funded by the Australian Research Council and supported by QLD Department of Education, Griffith Institute for Educational Research, and Liveworm Studio, Queensland College of Art and Design.

j.alford@griffith.edu.au

